

# PORTES DU BEAUJOLAIS

CAMPING & LODGE



## PRICELIST 2021

By Out d'Ôr



[contact@camping-beaujolais.com](mailto:contact@camping-beaujolais.com)

04 74 67 12 87

495 Avenue Jean Vacher,  
69480 Anse





# CARAVANS, MOTOR HOMES ET TENTS

(A day in our camping is counted from 12 am to 12 am)

An identitycard will be asked during your registration

Reception open from 1st March until 31 October from 8h30 to 12H and from 14h to 19h



LOW SEASON : 01/03 TO 04/04 AND 30/09 AU 31/10  
 MEDIUM SEASON : 04/04 TO 06/07 AND 29/08 TO 30/09  
 HIGH SEASON : 06/07 TO 29/08



APPLICABLE TARIFF UNTIL 1ST MARCH 2021

PITCHES FROM 80M<sup>2</sup> MINI  
 (NUMBER : 130)

(CARAVAN, MOTOR-HOMES OR TENT)

	LOW SEASON	MEDIUM SEASON	HIGH SEASON
<b>PACKAGE «NATURE»</b> PITCH + 1 VEHICLE + 2 PEOPLE	20,00 €	24,00 €	27,00 €
<b>PACKAGE «CYCLING / HIKING»</b> PITCH + 1 PERSON	13,00 €	17,00 €	18,00 €
<b>PACKAGE «COMFORT»</b> PITCH + 1 VEHICLE + 2 PERSONS + ELECTRICITY 10 A + WATER	26,00 €	30,00 €	33,00 €
<b>EXTRAS</b>			
ADULT	5,00 €	5,50 €	6,00 €
CHILDREN FROM 2 TO 7	3,50 €	4,00 €	4,50 €
CHILDREN BELOW 2	Free	Free	Free
EXTRA TENT	3,00 €	3,00 €	3,00 €
EXTRA VEHICLE	3,00 €	3,00 €	3,00 €
PETS	3,00 €	3,00 €	3,00 €
ELECTRICITY 10 A + WATER	6,00 €	6,00 €	6,00 €
SEWAGE DISPOSAL	1,80 €	2,00 €	2,00 €
DOUBLE AXLE CARAVAN	40,00 €	50,00 €	50,00 €
ADULT VISITOR + 2 HOURS	3,00 €	3,00 €	3,00 €
LOCAL ACCOMODATION TAX	0,40 €	0,40 €	0,40 €
ECOLOGICAL TAX	0,66 €	0,66 €	0,66 €

CANCELLATION GUARANTEE REFUND WITHOUT ANY EXPLANATION UP TO DAY PRIOR TO ARRIVAL 3€/DAY

MAXIMUM CAPACITY FOR A CAMPING PITCH IS 6 PEOPLE AND 3 TENTS

## RENTALS

(A day in our camping is counted from 4 pm to 10 am)

An identitycard will be asked during your registration

LOW SEASON : 01/01 TO 10/07 AND 28/08 TO 31/12  
 HIGH SEASON : 10/07 TO 28/08

CANCELLATION GUARANTEE REFUND WITHOUT ANY EXPLANATION UP TO DAY PRIOR TO ARRIVAL 5€/DAY

68 LOCATIFS SUR 7 HECTARES

N° d'enregistrement de l'établissement : C69-001942-002

Par décision en date du 11 mai 2017

# CARAVANE « MY DROP »

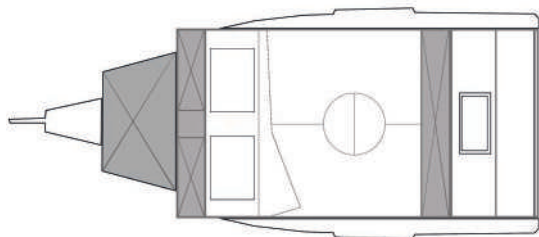
(01/04 TO 30/09)

Construction year : 2020

Floor area of 4,41 m<sup>2</sup>. (L 4,35 m / h 1,87 m / l 1,90)

Double bed (140 x 200). 100 Ah battery with PC 12V, USB and 220V sockets.

Removable kitchen: Portable stove, storage, 20 liter water tank.



EXCEPTIONAL

OFFER

\* 50 % discount on Saturday  
from 1/01 to 23/03 and  
from 23/10 to 18/12  
Except holidays  
and 8 december

	LOW SEASON	HIGH SEASON
1 NIGHT (WEEK)	45€	85€
FRIDAY	75€	95€
SATURDAY	105€*	105€
WEEK-END	105€	FROM 190 TO 200€
WEEK	199€	499€

CARAVANE «MY DROP » (NOMBRE : 2) FOR 2 PEOPLE

# ECOLODGE

(01/01 TO 31/12)

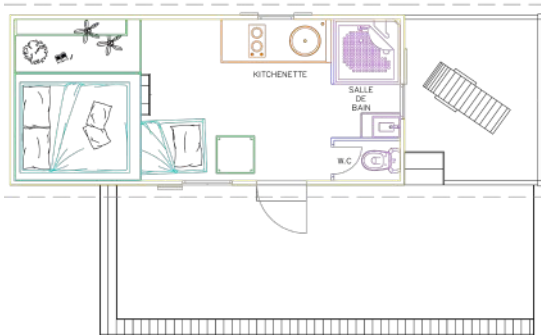
AGE : 7 to 12 Years

Total surface area : 22 m<sup>2</sup> + 13 m<sup>2</sup> of terrace with garden furniture for 3  
1 bedroom with double bed (160 x 190) et 1 pull-out bed.

Blankets and pillows provided.

1 fully-equipped kitchenette : induction rings, microwave, fridge, coffe machine,  
crockery en cutlery, wine cooler.

1 shower room with separate WC.



EXCEPTIONAL

OFFER

\* 50 % discount on Saturday  
from 1/01 to 23/03 and  
from 23/10 to 18/12  
Except holidays  
and 8 december

	LOW SEASON	HIGH SEASON
1 NIGHT (WEEK)	64€	104€
FRIDAY	84€	144€
SATURDAY	170€*	144€
WEEK-END	170€	FROM 248 TO 288€
WEEK	314€	714€

ECOLODE (AVAILABILITY : 2) FOR 2/3 PEOPLE

# EVOZOME

(01/06 TO 31/10)

Construction year : 2020

Total area: 26 m2.

1 double bed (140 x 190). 1 shower room with WC

Blankets and pillows provided



	LOW SEASON	HIGH SEASON
1 NIGHT (WEEK)	85€	115€
FRIDAY	104€	174€
SATURDAY	214€*	174€
WEEK-END	214€	289€ TO 348€
WEEK	414€	799€

EVOZOME (AVAILABILITY : 1) FOR 2 PEOPLE

# CHALET NEVA

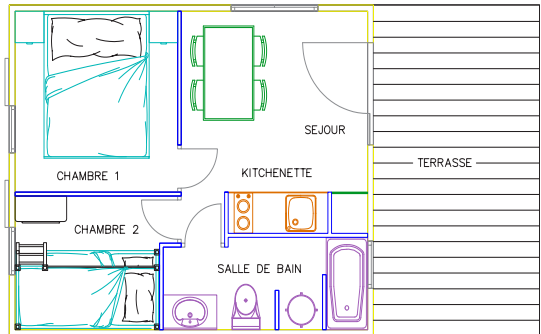
(01/01 TO 31/12)

Age : Renovated in 2014

Total surface area : 24 m<sup>2</sup> + 10 m<sup>2</sup> of terrace with garden furniture for 4.  
 1 bedroom with double bed (140 x 190), 1 bedroom with bunk beds (80 x 190)  
 Blankets and pillows provided

1 fully-equipped kitchenette : electric rings, microwave, fridge, coffee machine,  
 crockery and cutlery.

1 shower room with separate WC.



	LOW SEASON	HIGH SEASON
1 NIGHT (WEEK)	59€	105€
FRIDAY	84€	145€
SATURDAY	164€*	145€
WEEK-END	164€	FROM 250 TO 290€
WEEK	314€	684€

CHALET NEVA (AVAILABILITY : 9) FOR 4 PEOPLE

# CHALET « CLUB PMR »

(01/04 AU 30/09)

Age : 7 to 12 years

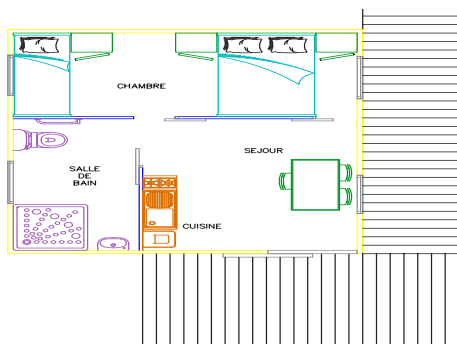
Total surface area : 35 m<sup>2</sup> + 11 m<sup>2</sup> of terrace with garden furniture for 3.

1 bedroom with double bed (140 x 190) and 1 single bed.

Blankets and pillows provided

1 fully-equipped kitchenette : electric rings, microwave, fridge, coffee machine.

1 shower room with walk-in shower, with seat and WC.



	LOW SEASON	HIGH SEASON
1 NIGHT (WEEK)	55€	95€
FRIDAY	70€	135€
SATURDAY	144€*	135€
WEEK-END	144€	FROM 220 TO 270€
WEEK	314€	644€

CHALET « CLUB PMR » (AVAILABILITY : 1) FOR 3 PEOPLE

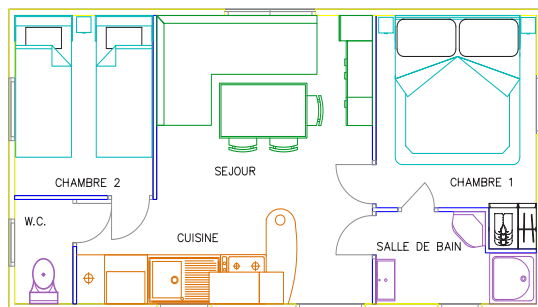


# MOBILE HOME « SUPER MERCURE »

(01/01 AU 31/12)

Age : 0 to 7 years

Total surface area : 27 m<sup>2</sup> + 12 m<sup>2</sup> of terrace with garden furniture for 6.  
 1 bedroom with double bed (140 x 190). 1 bedroom with two single bed (80 x 190). 1 sofa bed (130 x 190) in the living room. Blankets and pillows provided.  
 1 fully-equipped kitchenette: gas rings, microwave, fridge, coffee machine, crockery and cutlery.  
 1 shower room with separate WC



	LOW SEASON	HIGH SEASON
<b>1 NIGHT (WEEK)</b>	90€	135€
<b>FRIDAY</b>	100€	175€
<b>SATURDAY</b>	204€*	175€
<b>WEEK-END</b>	204€	FROM 310 TO 350€
<b>WEEK</b>	435€	894€

MOBILE HOME « SUPER MERCURE » (AVAILABILITY : 15) FOR 4/6 PEOPLE

# MOBILE HOME « RIVIERA SUITE »

(01/01 TO 31/12)

Age : New

Total surface area : 29 m<sup>2</sup> + 10 m<sup>2</sup> of terrace with garden furniture for 7  
 1 bedroom with double bed (140 x 190). 1 bedroom with bunk bed (80 x 190)  
 and 1 single bed (80 x 190). Blankets and pillows provided.

1 fully-equipped kitchenette: electric rings, microwave, full size fridge, coffee machine,  
 crockery and cutlery.

1 shower room with separate WC



	LOW SEASON	HIGH SEASON
1 NIGHT (WEEK)	94€	145€
FRIDAY	105€	185€
SATURDAY	214€*	185€
WEEK-END	214€	FROM 330 TO 370€
WEEK	445€	914€

MOBILE HOME «RIVIERA SUITE » (AVAILABILITY : 9) FOR 5/7 PEOPLE

# CHALET MARINA

(01/01 TO 31/12)

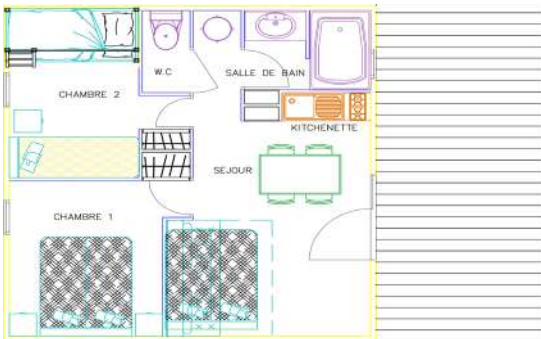
Age : Renovated in 2014

Total surface area : 34 m<sup>2</sup> + 16 m<sup>2</sup> of terrace with garden furniture for 7.

1 bedroom with double bed (140x190) and 1 bedroom with two bunk beds (80x190) and 1 single bed (90x190), 1 sofa bed (140x190) in the living room. Blankets and pillows provided.

1 fully-equipped kitchenette: electric rings, microwave, full size fridge, coffee machine, crockery and cutlery.

1 shower room with separate WC



EXCEPTIONAL

OFFER

\* 50 % discount on Saturday  
from 1/01 to 23/03 and  
from 23/10 to 18/12  
Except holidays  
and 8 december

	LOW SEASON	HIGH SEASON
1 NIGHT (WEEK)	94€	145€
FRIDAY	105€	185€
SATURDAY	214€*	185€
WEEK-END	214€	FROM 330 TO 370€
WEEK	445€	914€

CHALET MARINA (AVAILABILITY : 9) POUR 5/7 PEOPLE

# MOBILE HOME « SUPER CORDELIA »

(01/01 TO 31/12)

Age : 0 to 7 years

Total surface area : 30 m<sup>2</sup> + 15 m<sup>2</sup> of terrace with garden furniture for 8.  
1 bedroom with double bed (140x190) and 2 bedrooms with two single beds (80x190), 1 sofa bed (130x190) in the living room. Blankets and pillows provided.

1 fully-equipped kitchenette: gas rings, microwave, full size fridge, coffee machine, crockery and cutlery.

1 shower room with separate WC



**EXCEPTIONAL  
OFFER**

\* 50 % discount on Saturday  
from 1/01 to 23/03 and  
from 23/10 to 18/12  
Except holidays  
and 8 december



	LOW SEASON	HIGH SEASON
<b>1 NIGHT (WEEK)</b>	105€	165€
<b>FRIDAY</b>	120€	214€
<b>SATURDAY</b>	254€*	214€
<b>WEEK-END</b>	254€	FROM 379 TO 428€
<b>WEEK</b>	505€	1014€

MOBILE HOME « SUPER CORDELIA » (AVAILABILITY : 12) FOR 6/8 PEOPLE

# CHALET POLYNÉSIE

(01/04 TO 30/09)

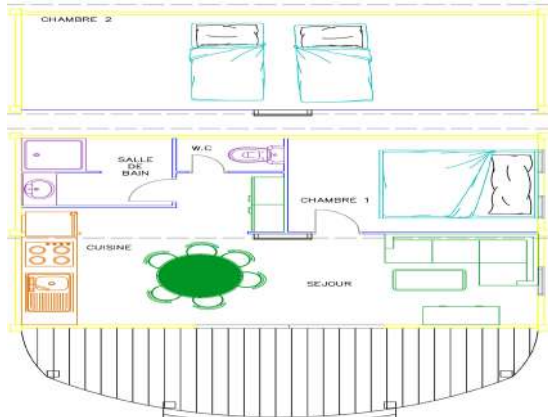
Age : 7 to 12 years

Total surface area : 30 m<sup>2</sup> + 13 m<sup>2</sup> of terrace with garden furniture for 4.

1 bedroom with double bed (140x190) and 1 mezzanine (access by a steep ladder) with two single beds (80x190). Blankets and pillows provided.

1 fully-equipped kitchenette : induction rings, microwave, full size fridge, coffee machine, crockery and cutlery.

1 shower room with separate WC



EXCEPTIONAL

OFFER

\* 50 % discount on Saturday  
from 1/01 to 23/03 and  
from 23/10 to 18/12  
Except holidays  
and 8 december

	LOW SEASON	HIGH SEASON
1 NUIT (SEMAINE)	80€	115€
VENDREDI	90€	145€
SAMEDI	184€*	145€
WEEK-END	184€	FROM 260 TO 290€
WEEK	415€	814€

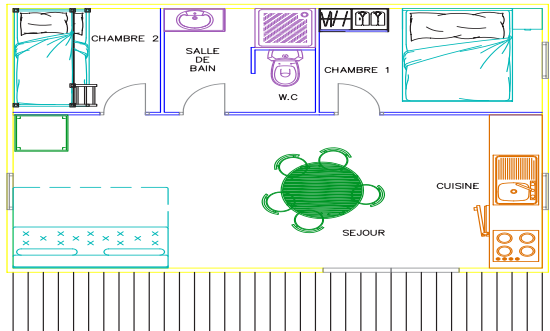
CHALET POLYNÉSIE (AVAILABILITY : 1) FOR 4 PEOPLE

# CHALET CANADIEN

(01/04 TO 30/09)

Age : 7 to 12 years

Total surface area: 35 m<sup>2</sup> + 16 m<sup>2</sup> of terrace with garden furniture for 6.  
 1 bedroom with double bed (140x190) and 1 bedroom with two bunk beds (80x190), 1 sofa bed (130x190) in the living room. Blankets and pillows provided.  
 1 fully-equipped kitchenette: electric rings, microwave, fridge, coffee machine, crockery and cutlery.  
 1 shower room with separate WC



	LOW SEASON	HIGH SEASON
<b>1 NIGHT (WEEK)</b>	95€	145€
<b>FRIDAY</b>	105€	185€
<b>SATURDAY</b>	214€*	185€
<b>WEEK-END</b>	214€	FROM 330 TO 370€
<b>WEEK</b>	475€	914€

CHALET CANADIEN (AVAILABILITY : 1) FOR 4/6 PEOPLE

# LE LEM

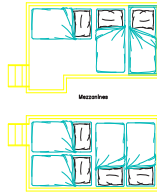
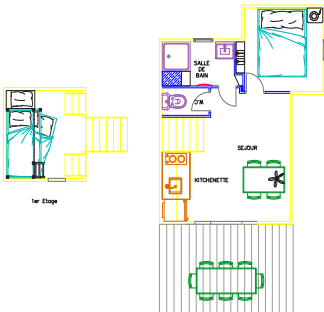
(01/01 AU 31/12)

Age : 0 to 7 years

Total surface area : 45 m<sup>2</sup> + 10 m<sup>2</sup> of terrace with garden furniture for 2.  
1 bedroom with double bed (140x190), 1 landing with 2 bunk beds (80x190) and 2 mezzanines with 3 single beds each (80x190). Blankets and pillows provided.

1 fully-equipped kitchenette: induction rings, microwave, full size fridge, coffee machine, crockery and cutlery.

1 shower room with separate WC



	LOW SEASON	HIGH SEASON
1 NIGHT (WEEK)	115€	185€
FRIDAY	135€	235€
SATURDAY	284€*	235€
WEEK-END	284€	FROM 420 TO 470€
WEEK	615€	1 214€

LE LEM (AVAILABILITY : 1) FOR 10 PEOPLE

# LA PAILLOTTE 4 CHAMBRES

(01/01 TO 31/12)

Age : 2019

Total surface area : 38 m<sup>2</sup> + 16 m<sup>2</sup> of terrace with garden furniture for 10.  
 1 bedroom with double bed (140x190), 1 bedroom with two single beds (80x190), 1 bedroom with two single beds (70x190), 1 bedroom with one single bed (70x190) and 1 trunkle bed (70x190) + 1 sofa bed (130x190) in the living room. Blankets and pillows provided.  
 1 fully-equipped kitchenette: gas rings, microwave, full size fridge, coffee machine, crockery and cutlery. 1 shower room with separate WC



	LOW SEASON	HIGH SEASON
<b>1 NIGHT (WEEK)</b>	115€	185€
<b>FRIDAY</b>	135€	235€
<b>SATURDAY</b>	284€*	235€
<b>WEEK-END</b>	284€	FROM 420 TO 460€
<b>WEEK</b>	615€	1 214€

LA PAILLOTTE 4 CHAMBRES (AVAILABILITY : 3) FOR 10 PEOPLE



# RENTAL INVENTORY OF THE CAMPSITE

## DISHES

- Big plates
- Small plates
- Bols
- Coffe cup
- Water glasses
- Water decanter
- Knives
- Forks
- Smalls spoons
- Big spoons
- Salad Bowl 27 cm
- Salad Bowl 18 cm
- Salad cultery
- Bread knife
- Potato peeler

## KITCHEN

- Refrigerator
- Cook tops
- Coffee machine
- Pan 16 cm
- Pan 18 cm
- Pan 20 cm
- Large casserole dish 16 L
- Frying pan
- Vegetable colander
- Table mat
- Cutlery tray
- Chopping oard
- Ladle
- Wooden spoon
- Microwave oven

## TERACE AND LIVING ROOM

- Table
- Armchairs
- Chairs
- Stools

## BEDROOMS

- Pillows
- Blanket 1 people
- Blanket 2 people

## MAINTENANCE

- Dooamat
- Bucket
- Shovel and brush
- Garbage can
- Floor cloth
- Clothes-horse
- Hanger
- Broom
- Bassine
- Toilet Brush

# ADDITIONAL SERVICES

## Extras

- Sheets, towel : 8 €/person
- Sheets : 4,50 €/person
- Baby package (rent of a baby high chair and a baby bed) : 3,50 €/day
- Final cleaning : 90,00 €
- Ménage réduit : 49,00 €
- Access to Inernet (Wifi) : 2 €/1 h ; 3.5 €/1 day ; 15 €/week
- Washmachine : 5,00 €/coin
- Drymachine : 5,00 €/coin
- Mini-golf : 2,00 €/player

---

## OPTIONAL ASSURANCE

- Cancellation guarantee for pitch (up to 1 day prior to the arrival date) : 3,00 € /jour
- Cancellation guarantee for accomodation (up to 1 day prior to the arrival date) : 5,00 € /jour
- Cancellation guarantee management fees: € 15.00

## BOOKING FEES

- Booking fees for camping reservations: € 3.00
- Accommodation booking fees: € 15 (free for internet bookings)
- Cash, Check, Credit Card, Transfer

EURL ART ET VACANCES  
capital social 7500€  
RCS : Villefranche sur Saone-Tarare  
B 453 681 660  
FR23400099040  
SIRET : 45368166000016

# RESERVATION CONTRACT

Name :

Firstname :

Address :

Postal code :

City :

Country :

Phone :

E-mail :

## FAMILY MEMBERS

Name :

Firstname :

Date of Birth :

Name :

Firstname :

Date of Birth :

Name :

Firstname :

Date of Birth :

Name :

Firstname :

Date of Birth :

Name :

Firstname :

Date of Birth :

Pets :

Yes

No

Kind :

## CHALETS / MOBIL HOMES

- Ecolodge
- Chalet Neva
- Chalet Club PMR
- Evozome
- Chalet Mercure
- Mobile Riviera
- Chalet Marina

- Mobile Cordelia
- Chalet Polynésien
- Chalet Canadien
- Le Lem
- La Paillotte
- Caravane my drop

## CARAVANS / MOTOR HOMES / TENTS

- Tent
- Caravan
- Motor homes
- Electricity
- Extra vehicle

## CANCELATION ASSURANCE

Accommodation cancellation assurance: 5 € /day (details in sales of term)

Camping cancellation assurance: 3 € /day (details in sales of term)

## ARRIVAL AND DEPARTURE

Arrival date : ...../...../.....

Departure date : ...../...../.....

Number of nights :

---

Terms of sale have been readed and accepted

Sign :

# CAMPING SERVICES

- Balneotherapy and Spa area
- Aquatic area with indoor heated pool
- Deposit of bread
- Small grocery shop
- Equipment rental
- Equipment loan
- Self-service washing machine and dryer.
- Wifi access (free at reception, paid on site)
- Restaurant open from July 1 to August 31
- Animation from July 10 to August 27



# CAMPING LES PORTES DU BEAUJOLAIS, GENERAL SALES TERMS:

The present terms and conditions cover all holiday rentals at Les Portes du Beaujolais. They are considered as an integral part of any contract made out between the campsite and the customer. A campsite pitch rental or a holiday rental implies the total acceptance of the terms and conditions by the contracting parties. The present contract is not subject to the conditions as specified in a tenancy agreement, but to those of the decree 93-39 of 11/01/1993 from the judgment of 11/01/1993 presiding over the camping/caravanning industry.

## **Booking procedure:**

Bookings are treated from 1st January in a chronological order according to the reception by our service. Please be aware that a booking is strongly advised, particularly for the months of July, August and September. You can book directly online (<http://camping-beaujolais.fr>) or make an option by post or by email. In return you will receive 2 booking forms. You then have 10 days to confirm this option by returning one booking form completed and signed together with an advanced payment of 30% of the total amount of the booking (deadline to be respected according to the post office stamp date). Your booking is only confirmed on receipt of these documents by our service. We will then send you a confirmation by return. The rental of a camping pitch or of a chalet, mobile-home accommodation indicates full acceptance of the sales terms by the contracting parties.

## **Camping pitch hire:**

We will provide you with an empty camping pitch, for up to 6 people, on which to install your tent, caravan or camping car between 1st April until 30th September.

Camping pitch fee: Rates are calculated per overnight stay. The price is in Euros, VAT included, not including tourist tax (0.40€/adult/day). Places are available from 12:00 on the day of arrival and must be vacated before 12:00 on the day of departure. Any overrun of the departure deadline will result in invoicing for an additional day. The fixed fee includes: a structure and a vehicle. This fixed fee gives free access to the sanitary arrangements, reception area, swimming pool (between the dates it is open), and the game areas and entertainment activities (in July and August). Some prices may include 1 or 2 people (see if specified on the price list).

Supplements: Additional people (adults or children) or additional items occupying the camping place (second vehicle, animal, etc.) will be the subject of a daily supplement. Please note: the places are given without any difference, according to the booking rank. The Management reserves the right to modify the place number when the camper arrives.

## **Accommodation rental:**

Rental season definitions: Please refer to the price lists.

Rental periods and duration: Rentals are available by the week or by the night. The price indicated is in Euros, VAT included, not including tourist tax (0.40€/adult/day), éco participation (0.66€/adult-day)

The rental fee includes: accommodation rental, ancillary costs (water, gas, electricity, up to a limit of 200 kW per week), access to the reception area, swimming pool, and the game areas and entertainment activities (in July and August).

Rentals are available from 4 pm on the day of arrival and must be vacated before 10 am on the day of departure. Any overrun of the departure deadline will result in invoicing for an additional day.

Transfer, sublet: ALL accommodation rental is nominative and in no event whatsoever can be ceded or sub-let.

Guarantee deposit: On arrival, tenants must leave a guarantee deposit of 300€. To pay it, a credit card, bank check or cash is required. This will be returned to them on the day of departure after a premises check and an outgoing inventory is found to be correct. Should this not be the case, the following sums will be deducted from the guarantee deposit: The value of any missing items

A fixed sum of 90€ for premises considered not to have been properly cleaned. The amount of any repairs for damage for which the occupier is responsible.

The amount of the repairs higher than the deposit will be billed to the occupier after deduction of the deposit.

## **Payment:**

Reservations only become effective after confirmation by our reservation services and payment by the tenant of an advanced payment. Booking fees are 3€ for a camping pitch and 15€ for a rental.

Camping pitches: the balance for the period of occupation should be paid 21 days before the day of arrival.

Rentals: The balance of the rental sum should be paid 21 days before the day of arrival, otherwise it will be debited automatically.

## **Modification of booking:**

Late arrival / early departure cannot be refunded. In the absence of information from you before 7.30pm the evening of your planned arrival, we reserve the right to cancel your booking without refund.

## **Special offers - Last minute deals:**

When it occurs, some customers may pay a different price for the same stay. The difference between the price actually paid and the special offer price will not be paid back to the customers who paid the higher amount, in any way. Special offers cannot be combined with any other promotional offers.

## **Cancellation:**

If the cancellation is incurred by the campsite: Exceptionally we may have to cancel your booking for safety reasons or in exceptional unavoidable circumstances. We will, where possible, offer you an alternative which you are not obliged to accept. In this case, we will refund the total amount already received.

In the case of cancellation during your stay: due to uncivil behavior or disrespect of the internal regulations, we reserve the right to expulse anyone from the campsite. All sums received will be kept by the campsite. The nights spent on site will be due.

In the event of cancellation by the customer: a written notice must be made (by registered post or email with receipt of reception). If no notice is given, the customer is upheld to pay the totality of the sum due according to the booking form. The campsite reminds you that according to article L.121-20-4-2° of the rights of the consumer, right of retraction does not apply to accommodation, transport, restauration and leisure activities supplied on a date for a pre-determined period.

## **Cancellation scale:**

Between the reservation and 21 days before the date of arrival: the pre-payment is retained which corresponds to the payment of cancellation costs.

Less than 21 days before the date of arrival or in case of a no-show: the total cost is payable.

## **Optional cancellation guarantee:**

We offer an optional cancellation guarantee which covers all these different costs. The cost of the guarantee is 5€ per night for a rental and covers all eventualities whatever the reason. If this option is taken, the total cost of the stay (minus booking fees and guarantee fee) will be refunded up to the day before arrival. The cost of the guarantee is 3€ per night for a camping pitch and covers all eventualities whatever the reason. If this option is taken, the total cost of the stay (minus booking fees 15€ and guarantee fee) will be refunded up to the day before arrival.

## **Period of Withdrawal:**

In accordance with article L.121-20-4-2° of the Consumer Code, there is no right of withdrawal.

Indeed, the right of withdrawal cannot be used for contracts for (for example) the provision of accommodation.

## **Means of payment accepted:**

bank card (Visa-Mastercard-Maestro) from 10€ on line by paypal or on site French bank cheque payable to Camping Les Portes du Beaujolais chèques vacances

- bank transfer: IBAN: FR76 1780 6006 2675 8193 4100 055

BIC: AGRIFRPP878

cash (on site or money order) for a maximum of 300€ per stay with different dates (art. 19 LFR 2013) Any bank charges are for the cost of the customer.

## **Campsite rules and regulations:**

Every camper is expected to comply with the campsite rules, under penalty of sanctions that may result in the cancellation of the contract.

Consumer Mediator: In accordance with the provisions of Article L 1612-1 of the Consumer Code, every campsite customer has the right to seek a consumer mediator free of charge with a view to amicably settling any dispute between himself and the operator of the land. The details of the consumer mediator that the customer can call upon are as follows: Referral by internet by filling out the form provided: [www.medicys.fr](http://www.medicys.fr) HYPERLINK «<http://www.medicys.fr>» Referral by email: [contact@medicys.fr](mailto:contact@medicys.fr) HYPERLINK «mailto:contact@medicys.fr» Referral by post: 73, boulevard de Clichy 75009 PARIS telephone 01 49 70 15 9